

15 AIRBRIDGECARGO



We love
to make it happen.

abc | XL⁷over
size

 IATA Member

IOSA Registered Operator

CARGO*iQ*

For your oversize and heavy cargo



We are market leader when it comes to XL cargo.

abc | XL^{over size}

Safe, reliable, innovative. These aren't just buzzwords to us. From aviation aircraft engines to drilling offshore equipment, satellite systems and beyond – we understand that certain cargo shipments require special attention and handling. At AirBridgeCargo, we have more than 29 years of Volga-Dnepr Group experience in transporting heavy and oversize cargo. No matter how complex the shipment, ABC offers customized logistics solutions tailored to the needs of each customer. **Always. Worldwide.**

Our abc XL product was developed to **safely, efficiently and timely transport** cargo that according to its dimensions and weight cannot be loaded onto an aircraft on a standard pallet position. In these cases, additional attention is required to ensure the shipment arrives at its destination in perfect condition.

Our team at AirBridgeCargo is made up of expert loadmasters and loadplanners with decades of experience in creating tailor-made shipping solutions for heavy and oversize shipments. We combine proven principles with the latest ideas for efficient, reliable deliveries – in close cooperation with our customers. It is our goal to give our customers an extra peace of mind when choosing AirBridgeCargo, no matter how unique the shipment.

Specialized solutions for various industries

Oil & Gas industry

- Carriage of extra-long pipes, heavy diesel generators, compressors, pumps and other large and heavy drilling equipment
- Dedicated charter/part-charter services or re-routing in case of rig down situation
- Fast oil rig emergency response support

Aerospace industry

- Commercial aviation aircraft engines & components, empty stands delivery within network in compliance with OEM handling guidelines
- Vast experience in the transportation of satellite systems and other space equipment
- Transportation of small rotorcraft, fuselages, stabilizers, ailerons, etc.
- Express delivery of AOG spare parts

Your benefits at one glance

- Loadability checks, technical assessments of cargoes for transportation, including weight distribution, packaging and more
- Highly customizable logistics solutions (from design and manufacture of frames to packaging and delivery)
- Factory visits
- Nose cargo loading capabilities for extra-long pieces
- Certified, highly skilled staff across the entire network
- Door-to-door solutions for XL cargo (with trusted trucking partners)
- Load planning with the usage of 3D simulation software
- Design and production of special basements and frames for high-density cargo
- Special Operating Procedures for the transportation of aircraft engines
- Full compliance with Boeing & OEM guidelines and internal safety policies
- Customer service support, online track&trace option for all shipments



AirBridgeCargo operates one of the youngest freighter fleets in the global air cargo industry, consisting of state-of-the-art Boeing aircraft. Our fleet with nose door cargo loading capabilities can transport cargoes with a length of up to 44 meters, or with a width of up to 3.8 meters. We can also transport single shipments with a height of up to 3.15 meters or a weight of up to 62,000 kg. Anything beyond, we ship with Volga Dnepr's Il-76TD-90VD and An-124-100.

Thanks to our modern fleet, we can offer the following benefits

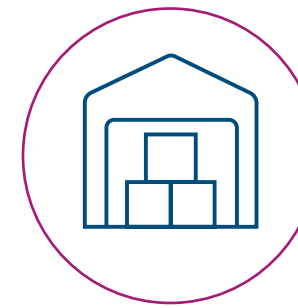
- Nose cargo door for quick and efficient loading/offloading of long and/or wide shipments
- Access to main deck cargo capacity across AirBridgeCargo's entire network
- State-of-the-art widebody aircraft in the air cargo industry
- GoGreen strategy – low levels of CO2 emissions

Delivered as promised. #always #worldwide



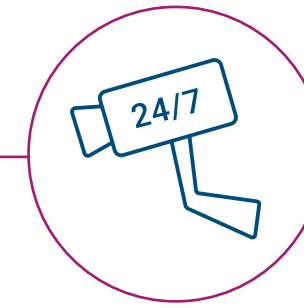
AirBridgeCargo's hub at Moscow Sheremetyevo airport features brand new equipment in each warehouse, allowing for a **seamless handling of XL cargo shipments**. Our unique hub network model and flight connectivity in Moscow lets our customers access connections within a 48-hour delivery time – including handling.

OUR MOSCOW HUB



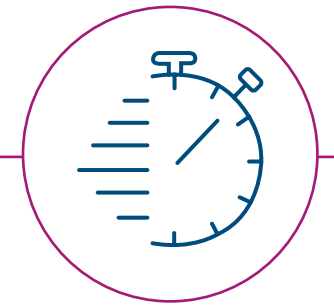
Warehouses

20,000m² of total warehouse space and 3 GHA warehouses



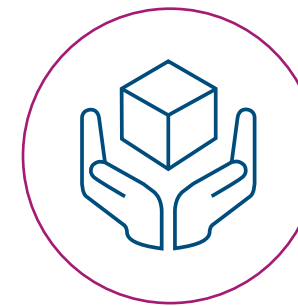
Security Measures

Enhanced security measures with 24/7 surveillance



Customs cleared cargo

for pick-up within 4 hours



Automated cargo handling system

First automated cargo handling system in Russia with 3D cargo handling on several levels



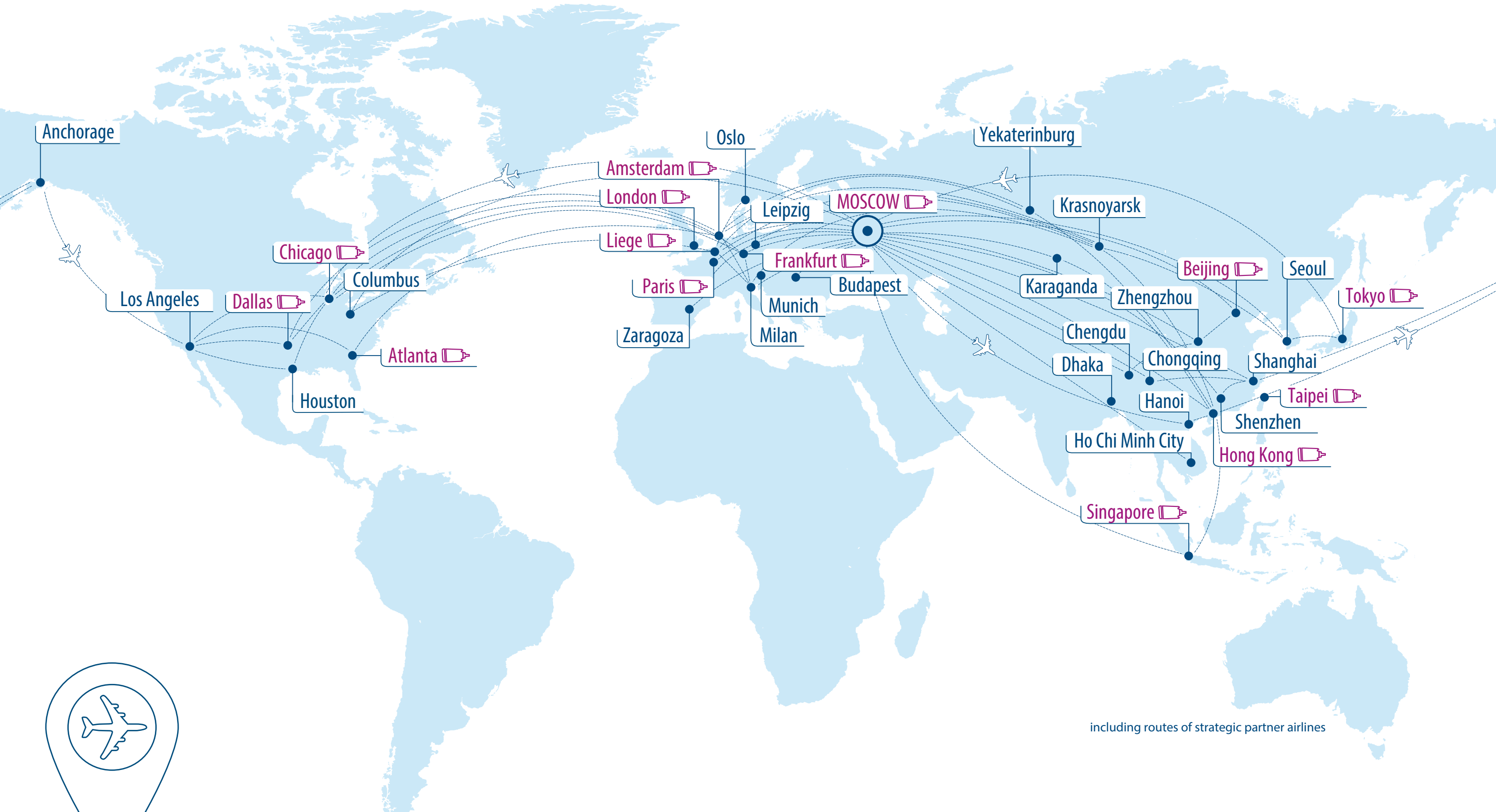
99,98% safety index



TAPA certified



You like knowing the possibilities are endless.



including routes of strategic partner airlines



#network #worldwide

11 in Europe and the Middle East 4 in Russia and CIS 14 in Asia 7 in the USA



A partner you can trust in.

AirBridgeCargo is the leading all-cargo carrier that operates among the top ten international cargo airlines worldwide.

Quality focus

- IATA and IOSA certified, full compliance with all international/internal safety guidelines and quality standards (Cargo IQ)
- Member of Cool Chain Association
- Qualified and certified team of logistics practitioners for transportation of general and special cargoes
- 24/7/365 Control Tower (CT) operation to monitor and manage transportation of special cargo consignments

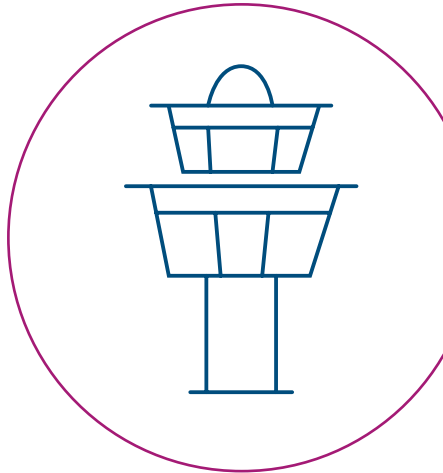


Special attention for special cargo

CONTROL TOWER

AirBridgeCargo Airlines has established a new 24/7/365 Control Tower (CT) group to monitor consignments of special cargoes and to proactively respond to service disruptions to ensure it consistently meets customers' delivery deadlines. Managed by a team of fully trained supply chain specialists and based in Moscow HQ the Control Tower provides:

- real-time, round-the-clock monitoring of all special cargo movements throughout the entire transportation process across ABC network
- checkup of ABC fleet technical condition (temperature control system, cargo handling system readiness)
- schedule alignment and control for priority delivery of special cargo
- communication with ABC specialists from different departments and customers in case of deviations
- cargo status updates and reports
- CT personnel availability 24/7 via e-mail, skype or direct phone line



Achievements and advantages

- More than 15 years of consecutive growth
- Over 30 airfreight destinations with effective connectivity options through hub in Moscow and 48 hour delivery time
- 1,300 cargo professionals worldwide
- Customized logistics solutions for transportation of general and special cargo
- State-of-the-art Boeing 747 fleet
- Logistics solutions, complemented by the extensive network of ABC interline partners and trucking companies worldwide





www.airbridgecargo.com

